

WEATHER

Table with weather forecast for Thursday, Friday, Saturday, Sunday, Monday, Tuesday, and Wednesday, including Max, Min, and Precip. columns.

The Chelsea Standard

QUOTE

'The ultimate result of shielding men from the effects of folly is to fill the world with fools.' -Herbert Spencer.

ONE HUNDRED-TENTH YEAR—No. 30 14 Pages This Week CHELSEA, MICHIGAN, THURSDAY, JANUARY 3, 1980 USPS 101-720 15c per copy SUBSCRIPTION: \$6.00 PER YEAR

Jaycettes Aid Battle On Reyes Syndrome

Michigan Jaycees and Jaycettes have been sponsoring projects to raise funds for the research of Reyes Syndrome since 1976. The \$40,000 raised thus far is approximately 30 percent of the funding for the Reyes Syndrome Study Center.

Chelsea's Jaycee Auxiliary is planning to assist in these efforts. According to Chairman Nan Rowe, the local group will conduct a Bowl Down Reyes Syndrome project in late January.

With the co-operation of Chelsea Lanes owner Ed Greenleaf, the Auxiliary will work with bowlers during an entire week on all leagues. Last year, Chairman Shirley Weatherwax was able to present a \$250 check to the Burn Center Fund from the Bowl for Burns project.

The participants won 50 percent of the money from the project, so \$500 was raised.

This project, however, has its focus not only on fund raising but also parent awareness. The Auxiliary will hand out fact sheets for parents to each child in the schools. Parents are urged to take time to read the facts about Reyes Syndrome.

Reyes Syndrome is a lethal disease that attacks children under 18 years of age. It affects every organ in the body, but predominantly the liver and brain. Unless the victim is treated immediately, death can result within two or three days.

Even those who survive may suffer brain damage, depending on the severity of the brain swelling. Michigan currently has the highest reported incidence of Reyes Syndrome in the United States.

It is primarily a disease of white, suburban children, equally divided between the sexes. Fatalities from the disease exceeded those due to rabies, tetanus, diphtheria, polio, measles, mumps and chicken pox. Reyes Syndrome has become the number two killer of children in several related central nervous system diseases, second only to encephalitis.

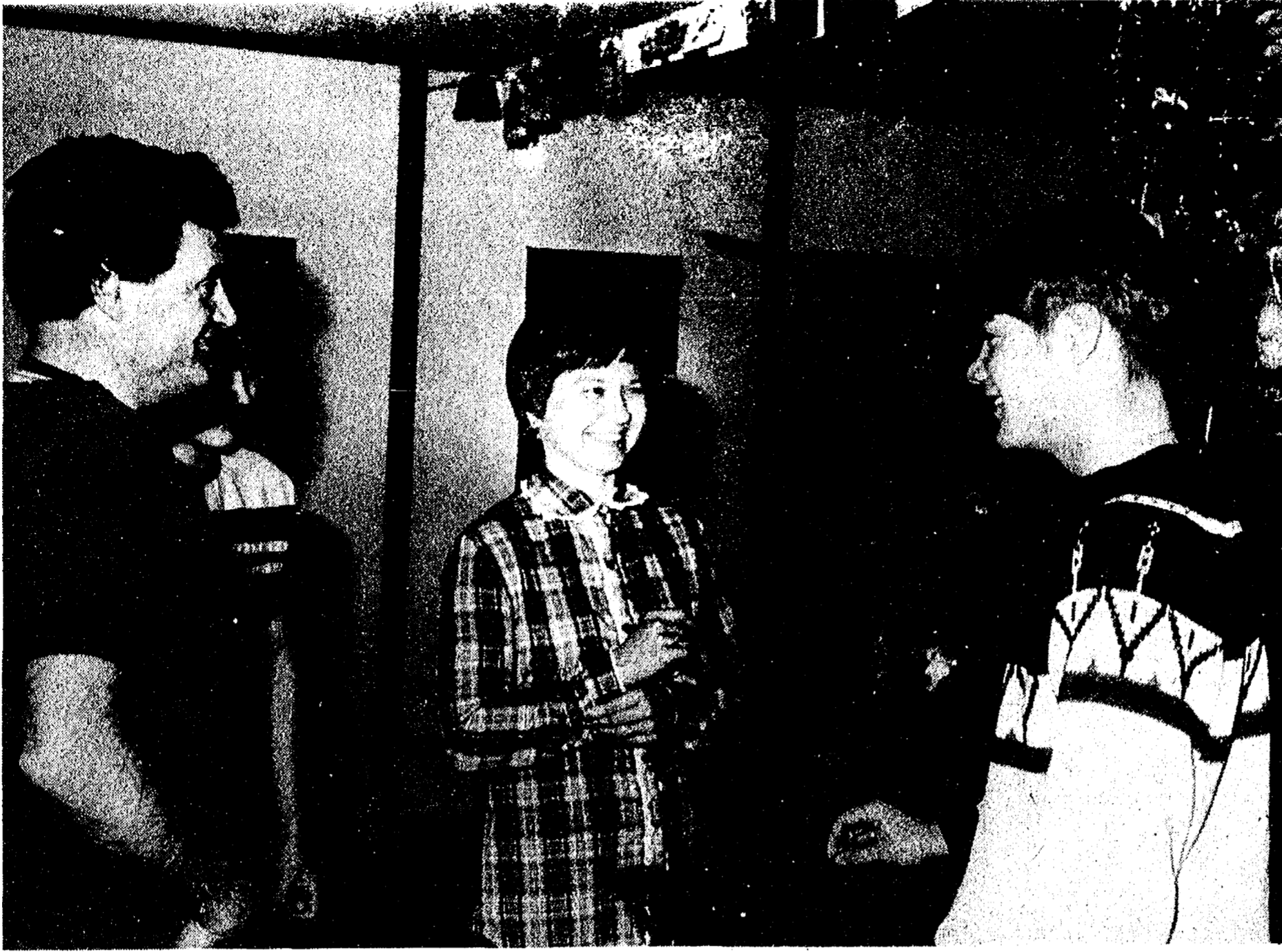
In addition, the National Center for Disease Control now ranks Reyes Syndrome among the top 10 killers for all children's diseases.

The Reyes Syndrome Study Center is located in the Detroit Medical Center. Funds are needed to continue research to find a key to better treatment of the disease. When treatment begins in the early stages, a child has a much better chance for recovery.

(Continued on page nine)

Coaches Needed To Help With Biddy Basketball

Coaches are still needed for the Chelsea Recreation Department's Biddy Basketball program which begins soon. Interested persons are asked to call the Chelsea Community Education Office at 475-9830 or Jackie Schiller, recreation director, at 475-1713 after 5 p.m.



HOME WITH THE FAMILY on North Territorial Rd. is a long way from Colorado and the Air Force Academy for Gary Packard, Jr., far right. A second-year cadet at the academy, Gary celebrated around the tree with his father, Gary Packard, Sr., mother Bernice and brother John, before returning to a tough academic schedule.

Air Force Cadet Gary Packard, Jr. Thriving on Rigorous Academy Life

Gary Packard, Jr. may still be waking up at 6 a.m., but the rest of the day is nothing like the heavy schedule he left behind at the Air Force Academy in Colorado Springs, Colo.

Until next Sunday, Packard will be able to enjoy the relatively lazy life of a civilian before returning to a seven-class schedule of 24 1/2 credit hours interspersed with physical education, intra-mural sports and study time.

The son of Gary and Bernice Packard of North Territorial Rd., Gary is a second-year cadet at the academy, having been appointed by Representative Bob Carr in 1978.

As Mrs. Packard points out, a lot of people have misconceptions about the daily life of a service academy cadet. "They always ask me when he's stationed now," she laughs, "but it's actually a university and not the actual Air Force."

According to Gary, the "typical" day is heavy with academics. Cadets rise at 6 a.m., attend classes from 7:30 a.m. to 3:30 p.m. with some breaks and lunch, to which they march in a group, inbetween. Every other day, intra-mural sports are required, and then following dinner, studying from 8 to 11 p.m.

According to Gary, lights are supposed to be out at 11, but seldom are. "They never bother to check because they know we've got such a heavy class load," he explained.

Gary is also an usher during services at the Catholic chapel at the academy.

A great deal of flexibility has been given to degree programs at

the academy, and cadets have a fairly broad range of choices, although most still opt to study engineering. After his core courses are completed, Gary will begin work on a degree in behavioral science, hoping some day to work as a counselor.

That, however, will come after his pilot training, which begins after his graduation from the academy. Although flying spots are hard to come by in today's

Air Force, "out of the academy, if you want to fly, you fly."

The Air Force Academy celebrated its 25th anniversary last year and houses and educates approximately 4,400 cadets at any one time. Like its sister schools, the Air Force academy now admits women for officer training.

Admission is not an easy procedure. Besides the recommendation of Congressman Carr,

Mshars Warn Others Following Tragedy

"It was a terrible, terrible experience. I'd like people to know what happened to us. If nothing else, our story can serve as an example for others. Maybe the information can save a life, and that's something I'm sure my dad would really want."

Those are the words in which James Mshar of Grand Rapids described the accident in his home that claimed the life of his father, former Chelsea resident Alexander Mshar, last week.

Carbon monoxide fumes seeped through holes in the furnace exhaust system as the family and the visiting Mshars slept Dec. 19, causing James Mshar's son, Michael, to awaken the family with his crying at about 1 a.m., Mshar thought at first the boy had the flu.

One short hour later quick work by an ambulance crew had Mshar, his mother, Ruth, wife Geraldine, and children in the emergency room for treatment.

But Alexander Mshar was pronounced dead at the home.

James Mshar says no one knows for sure when the deadly fumes began to seep from holes in the exhaust system of the furnace in their basement. "We think there may have been a problem as far back as last spring," he commented. "One evening my wife, myself and one of our children nearly collapsed in the upstairs bathroom."

Officials speculated that the smoldering fire in the fireplace may have drawn fumes from the furnace and spread them throughout the house. Mshar, however, said the faulty furnace needed no help from the fireplace to spread the deadly poison.

After awaking at his son's cries, Mshar reported feeling disoriented and confused. He finally called the Poison Control Center, which diagnosed the problem and told the family to open the doors, while notifying an emergency crew at Blodgett Memorial Medical Center. The crew pulled everyone out of the home, but Alexander Mshar, who was already dead.

Alexander Mshar had been a tool and die maker in Chelsea for more than 40 years before moving to Sarasota, Fla.

James Mshar came to a hard decision regarding the tragedy. "I knew that I would miss (dad), but I wondered what would he want me to do, and that's when I figured I should let people know our story," he said.

"He lived a good full life. I only hope the way he died can serve as a reminder to people of what can happen."

Beach School Art Show Set Next Tuesday

Beach Middle school's annual art show will be held this coming Tuesday, Jan. 8 from 7 to 8:30 p.m. at the school.

Student drawings, paintings, and three dimensional artwork from art classes will be displayed. Everyone is welcome to attend.

Mrs. Packard said Gary started on his paperwork in his junior year, amassing recommendation forms, taking physicals and filling out applications.

The school year doesn't end for cadets the way it does for other college students. There is a six-week summer program for all cadets each summer and vacations come only at Christmas and spring break. This year Gary won't be coming home for the break and his family won't see him again until summer.

The rare vacations home like this one are time for relaxation, eating home cooking and visiting old friends. "When he comes home we stock up on the food and figure he's going the sleep at least the first two days," Mrs. Packard summed it up.

Community Ed. Brochure Nearly Ready

Chelsea's Community Education Department is planning a fun-filled semester for the winter of 1980. The winter brochure should be in area homes no later than Jan. 7. If you do not receive a brochure, call the Community Education Office at 475-9830 from noon to 8 p.m. Monday through Thursday and noon to 4 p.m. on Fridays.

The winter brochure will include various adult enrichment classes, high school completion classes, the Super Saturday Program, recreation council and senior citizen activities.

Classes begin the week of Jan. 21 and you may register by sending in the form attached to the brochure or by coming in to the Community Education Department at Chelsea High school from noon to 8 p.m. Monday through Thursday or noon to 4 p.m. on Fridays.

Any questions regarding classes listed in the brochure, please feel free to contact the Community Education Department at 475-9830 during the above hours.

Vandals Destroy Windows, Lights At Beach School

Approximately \$577 worth of damage was done to windows at Beach Middle school sometime between Dec. 12 and 27, a custodian reported to Chelsea Police this week.

According to Police Chief Robert Aeillo, some 16 windows, two doors and 13 small floodlights were riddled with BB shot on the north and west sides of the building.

Some 14 2'x6' windows, two 30" x40" windows and two 2 1/2' x8' doors were seriously damaged in the incident. Police are investigating the incident.

Cagers Hone Skills During Holiday Break

Team drills, sprints, individual drills, sweat socks and scrimmages.

Together with pumpkin pie and mistletoe, these words have meant Christmas vacation to the 12 members of Chelsea High school's varsity basketball squad.

Almost every day, with the exception of Christmas and New Year's, the team appears at the gym for two hours of tightly scheduled practice. For Coach Robin Raymond, the hours are not intended to maintain the team's prowess as much as to improve it in all areas.

"Teams improve in practice, not by playing in a game," Raymond said. "If they have to think about it (in a game) they don't know it well enough. It should be second nature."

After four games in the regular season schedule, Chelsea boasts a 3-1 record, including an impressive win over previously unbeaten Milan. Raymond notes the progress of his squad carefully in the contests as well as practice sessions.

"I think we are where I thought we'd be," he affirmed. "We've had two pressure games so far this season. We learned a lot against Brighton that we used against Milan. The key to winning close games is to stop their momentum and regain your original lead. Against Milan we did that."

Chelsea's sole loss thus far this season came against Brighton, in a game in which Raymond says the team couldn't handle the pressure of a close contest. That aspect of team play has improved in the three succeeding games.

"Determining how good a team you are is done in pressure situations," explained Raymond. "Five of our top six players are seniors and have the experience which helps out in pressure games. They've seen it already. You expect your seniors to be able to handle pressure."

An area the team is working on during the vacation hiatus is rebounding, which hasn't yet satisfied Raymond in any of the four contests played this season.

Two specific drills are run every day to hone skills and increase aggressiveness. "You need desire and have to be aggressive to be a good rebounder," Raymond said. "Height alone doesn't make a good rebounder. You've got to drive in there and grab the ball."

Raymond has a personal list of 12 goals that the team tries to meet in each contest. Of the five defensive, four offensive and three combined goals, Raymond says a victory would be ensured by reaching seven. In the South Lyon game the team made six, but totaled only three in its victory over South Lyon.

Another goal is to shoot 70 percent in freethrows for the season. Right now the team has a 59 percent average.

Chelsea will need all the expertise and skill the team can muster when their season resumes Friday, Jan. 4 with a home contest against Dexter. The Dreadnaughts have three returning starters, all 6'2", and are thus far 1-3 on their season.

After Dexter comes a crucial contest with Saline, followed by games with Lincoln, Lumen Christi, Howell and Tecumseh. "After Tecumseh," predicted Raymond, "we'll know where we're at. During the second half of the season, there is usually no improvement as individual players. You'll see more team play than in the first half."

A question mark for the team right now is Karl Albrecht, known as Chelsea's "sixth starter," who is out with a knee injury received in a physical education class. "If Karl is unable to play," said Raymond, "it will hurt us. He doesn't start, but is our sixth starter. The top six on the varsity play almost evenly."

Raymond says that he tries to give all 12 of his players as much court time as possible, but in a tight contest would stay with his starters. "Participation is nice but you can only take it so far," he commented. "Ideally, everyone would play equally, but that's not reasonable. In the second half of the season..."



DRILLS, SPRINTS and more sprints provided the regimen for varsity Bulldog basketballers over the holiday break. Coach Robin Raymond is optimistic about the season remainder, feeling that "we are where we should be." Chelsea is 3-1 on the season so far, in a tie with Saline for first place in the SEC.



ANNIVERSARIES: Chelsea's First Congregational church on E. Middle St. will celebrate the 85th anniversary of the church building dedication this month and observed the 130th anniversary of the church organization this year. In this turn-of-the-century photograph, supplied by the Chelsea Historical Society, the present building is shown with Carl Jones, pastor from 1899 to 1905, in the oval inset. Jones' son, Harold Jones of Glazier Rd., provided information pointing to the Rev. Jones' tenure as "a period of prosperity and profit" for the congregation. Estimated cost of the buildings and all furnishings in 1895 was \$12-13,000.



# Aerobic Dancing Classes Slated

Every year, following the holiday season, millions of Americans resolve to "trim off inches" and "get back in shape." Unfortunately, by February most of these good intentions have gone unfulfilled.

This year, however, everyone in Chelsea can keep their resolutions by participating in Aerobic Dancing's newest session, "Winners!" which begins Jan. 7 in Chelsea.

This 12-week session will allow students to "trim holiday excess" through simple, vigorous dance movements, choreographed to everyone's favorite music. Aerobic Dancing combines all the essentials of a complete physical fitness program.

Classes will be held at St. Mary's school on Tuesdays and Thursdays at 9:30 a.m., and at North school on Mondays and Wednesdays at 7 p.m. There will also be an afternoon class at

North on Tuesdays and Thursdays at 4 p.m.

Interested persons may register with Chelsea Community Education at 475-9830. For additional information, please call Aerobic Dancing, Inc., at 475-9485.

## K. of C. Auxiliary Seeks Volunteers For Meal Service

The Knights of Columbus Women's Auxiliary meeting of Dec. 13 was attended by 22 interested women. It was again mentioned that those interested should place an order at Strieter's for K. of C. Auxiliary jackets as soon as possible.

The Christian Service Committee asked for volunteers to provide meals for parishoners who are temporarily unable to do so for themselves. They also asked that blankets be donated for the winter shelter, which is being set up for use in a winter emergency situation.

Discussion and approval of the by-laws began. This will be completed at the Jan. 10 meeting.

Christmas refreshments were served by hostess chairman, Nadine Koch.

All interested K. of C. wives or widows are urged to attend the Jan. 10 meeting, 8 p.m., at the K. of C. hall.



PEG SKELTON of Chelsea leads Aerobic Dancing instructors of southeastern Michigan in a practice session to prepare for "Winners!" the

Aerobic Dancing session for winter. The 12-week session will begin in Chelsea the week of Jan. 7.

## Homemakers Club Christmas Party

Homemakers Club held their annual Christmas Luncheon on Wednesday, Dec. 12 at the Red Lobster.

Following lunch, Secret Pal Christmas gifts were exchanged. It seems the Homemakers Club is full of gifted people. The hand-crafted items were beautiful.

1980 will begin with a presentation by Dr. Marguerite Shearer. This meeting will be held in the home of Leah Herrick on Thursday, Jan. 24 at 8 p.m.

## Rebekahs Name Appointed Officers

Chelsea's Rebekah Lodge No. 130 held its regular and combined Christmas meeting on Dec. 18 in their hall.

Appointed officers were announced by the incoming Noble Grand, Eulahlee Packard. Mrs. Helen Harris is Warden; Dorothy Keezer, Conductor; Elsie Hinz, right supporter to Noble Grand; Lulu Sweeny, left supporter to Noble Grand; Mary Ann Coltre, Chaplain; Olla Voelm, right supporter to V. G.; Marian Knobloch, left supporter to V. G.; Lillian Sanderson, Inside Guard; Lina Reule, Outside Guard; Velma Wolfe, Musician; and Verian Pickell, Past Noble Grand.

A joint installation will be held with Dexter Rebekah Lodge No. 480 on Jan. 7 in Dexter.

The Earl Grey degree team will be there to conduct the Ritualistic Degree and seat the new incoming officers. Guests are invited.

Boxes of Christmas cookies and treats were packed for the shut-in members of the Lodge. Drawing for the Christmas rug, donated by Mrs. Hochrein, was won by Mrs. Sanderson.

The next regular meeting will be Jan. 15 as the first regular time fell on New Year's Day.

## White Christmas

Mrs. Floyd E. Gentner of 316 Jackson St. returned home Sunday from Auroro, Colo., where she enjoyed a white Christmas with her son and family, Mr. and Mrs. Duane L. Gentner, daughter Lisa and son Christopher. The yuletide trip was a gift to Mrs. Gentner from them.

## Weight Reduction Classes Offered By Hospital

Chelsea Community Hospital is once again offering a series of eight weight reduction classes that will begin the week of Jan. 20.

Topics covered during the eight weeks include low calorie cooking tips, exercise and weight reduction, shopping tips, eating out on a low calorie diet, normal nutrition, and information on fad diets.

Particular emphasis will be given to assessing behavior modification techniques helpful to each person's weight reduction program.

The course will be taught by Julie Say, R. D., Community Nutritionist, and Patricia Asp, director of food service.

Each registrant will receive a personalized diet, knowledge of using behavioral techniques useful in controlling weight, and increased knowledge in nutritional aspects of weight reduction.

Community members who attended the fall series of weight reduction classes enjoyed learning about topics covered in the program. Class members were also pleased with their success in weight loss. The average weight loss for each class participant was one pound per week.

A registration fee of \$25 is charged to cover costs of the eight class series. Afternoon classes will be held at Chelsea Community Hospital, 775 S. Main St., at 4 p.m. each Tuesday. Evening classes will be held at Chelsea High school, Washington St., 7 p.m. Thursday evenings, beginning the week of Jan. 20 and ending the week of March 9.

For information about registration, phone (313) 475-1311, extension 360 or 369.

## CAROL'S CUTS

40 CHESTNUT

Monday, Wednesday and Friday

475-7094

Appts. Only 9:30 a.m. - 3:00 p.m.

# AFTER-CHRISTMAS Clearance

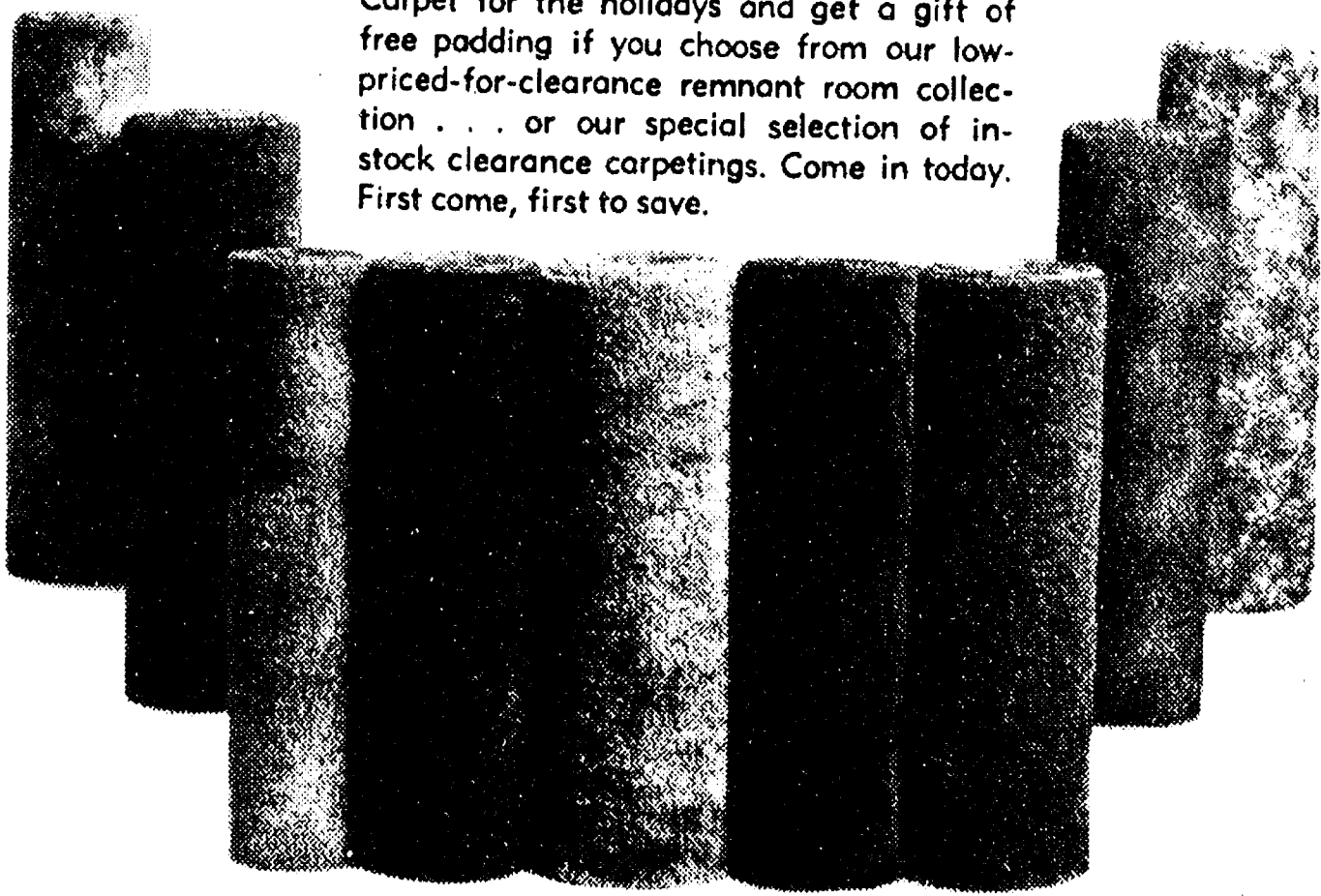
Selected Ladies Wear  
DRESSES - BLOUSES - JUMPERS  
SLACKS - CO-ORDINATE JACKETS  
LONG SKIRTS - PARTY PANTS

1/4 to 1/3 Off  
VOGEL'S

# Merkel

## CARPET CLEARANCE

### FREE PADDING



Carpet for the holidays and get a gift of free padding if you choose from our low-priced-for-clearance remnant room collection... or our special selection of in-stock clearance carpetings. Come in today. First come, first to save.

## MERKEL FURNITURE & CARPET

PHONE 475-8621 - USE YOUR VISA, BANKAMERICARD OR MASTERCARD.

# Red Cross Names Executive Director

Wesley B. McKenzie has been appointed executive director of the Washtenaw County Chapter of the American Red Cross, Kent Talcott, chapter president, announced today.

McKenzie replaces Donald Peak who has retired and moved to Galveston, Tex.

McKenzie has been the assistant national director of program operations in the American Red Cross headquarters Safety Services Section since 1978. He has served the Red Cross for 17 years at various field stations in the United States and overseas and had major assignments dealing with disasters in Alaska, the Gulf Coast and Guam.

McKenzie is married, has one son, and will be moving to the Ann Arbor area shortly.

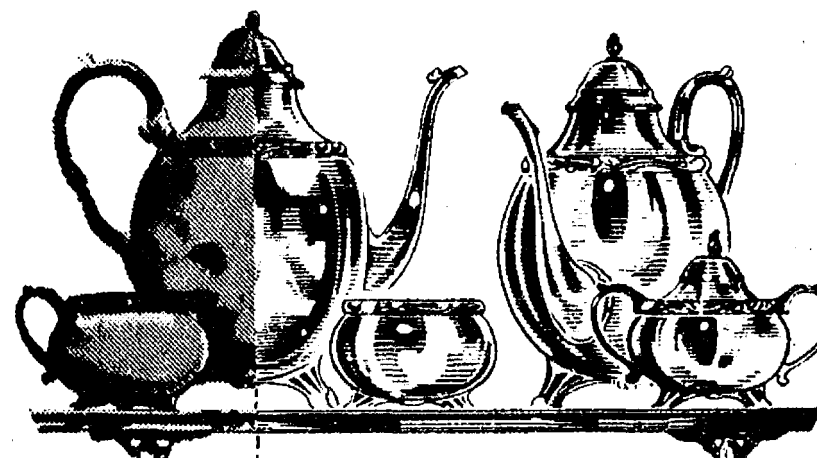
"We feel fortunate," Talcott said, "to have a man of such experience and demonstrated ability

to serve the citizens of the county through the Red Cross."

## Handy-Dandy Contraction

The notion of multi-purpose utensils is nothing new to the world. On July 6, 1897, one inventive person gained a patent for a combined grocer's packager-grater-slicer-mouse trap and fly trap. For obvious reasons, once a person had gotten to the last uses, the machine could never be returned to its grating or slicing stage, and the entire contraction disappeared from the shelves. Visitors who visit the newly opened 32,000-square-foot Interpretive Center of Henry Ford Museum, Dearborn, won't run across the five-in-one invention, but they will find hundreds of other artifacts which shaped the lives of folks long gone.

**ALL SILVER REPLATING REDUCED 20%**  
No charge for straightening\*  
DURING JANUARY ONLY



BEFORE AFTER

Make this YOUR Silver Investment for the Future!

Every Item Replated at Sale Prices

Since the value of old silverplated items continues to soar... this is an excellent time to take advantage of these low, low prices to have your worn silverware, antiques and family heirlooms replated like new. These pieces are now more valuable than ever and make wonderful gifts. All work HEAVILY SILVERPLATED by our skilled silversmiths and Sale prices apply to ALL pieces.

### For Instance

Article	Reg. Price	Sale Price
Teapot	\$74.95	\$59.96
Creamer	39.50	31.80
Candlestick (per inch)	4.25	3.40
Sugar Bowl	43.50	34.80
Trays (per sq. in)	.33	.26

**NEW! Full 25 Year Warranty on all silver replating.**  
ASK ABOUT FULL DETAILS

\*REPAIR POLICY: FREE DENT REMOVAL and straightening on all items we silverplate. ONLY \$18.50 FOR ANY KIND AND ALL ADDITIONAL REPAIRS, no matter how extensive. on any piece we silverplate. Includes soldering broken handles, legs, knobs, etc. (Only exceptions are for furnishing new parts.)

SALE ENDS JANUARY 31

BRING IN SILVER TODAY!

**WINANS JEWELRY**

We're Starting the New Year with a

# SALE!

## WOMEN'S

- Dresses . . . . . 1/3 Off
- Misc. Skirts . . . . . 1/3 Off
- Hang Ten Co-Ordinates 1/3 Off
- Queen Casual, Cos Cob & Trisi Co-Ordinates 20% Off
- Bobbie Brooks & Garland . . . . . 20% Off
- Fritzi & You Babe Tops, 20% Off
- Sweaters . . . . . 20% Off
- Jackets & Vests . . . . . 20% Off
- Slippers . . . . . 20% Off
- Sleepwear . . . . . 10% Off

## MEN'S

- Sweaters . . . . . 20% Off
- Knit Shirts . . . . . 20% Off
- Winter Dress Pants . . . . . 20% Off
- Jackets & Vests . . . . . 20% Off
- Snowmobile Suits . . . . . 10% Off
- Carhart . . . . . 10% Off
- Thermal Sox . . . . . 20% Off

## BOYS

- Sweaters . . . . . 20% Off
- Knit Shirts . . . . . 20% Off
- Wrangler Jeans & Corduroys . . . . . 20% Off
- Snowmobile Suits . . . . . 10% Off
- Jackets & Vests . . . . . 20% Off

## GIRLS & INFANTS

- Girls Co-Ordinates . . . . . 20% Off
- Health-Tex . . . . . 20% Off
- Jackets & Snow Suits . . . . . 20% Off

COMPLETE LINE SHOES FOR MEN, WOMEN, CHILDREN . . . . . Big Discounts

# DANCER'S

Chelsea's Friendly Dept. Store





**COOKING CLASSES:** Chelsea Child Study Club will be presenting a series of five cooking classes this year. On Feb. 4, Sherry Sundling of Chelsea will be featured with "French Cuisine." Sherry Sundling studied for nine years under the renowned Cordon Bleu graduate, Baroness Charity de Vicq Sucezek of Grosse Pointe. For six of those years, Sherry served as Madame Sucezek's assistant in her Birmingham gourmet

classes. Following this, Sundling worked with Yvonne Gill Davis of Tweeny's Restaurant in Birmingham and Duglass Duglass at The Great Dane in Farmington. She is presently employed at Elizabeth's in Northville. Since moving to Chelsea a year ago, she has done demonstrations at Kitchen Port in Ann Arbor and is currently giving lessons in her home.

# Frosty, Festive Fun in Michigan

Contrary to some opinions, winter in Michigan is a season of exciting events and exhilarating fun. It's every kind of winter sport you can think of—and some we thought up—plus a full program of family style festivals and events.

Probably the best known, and surely one of Michigan's most popular, ice covered events is Houghton Lake's "Tip-Up Town, USA" (Jan. 18-20, 28-27). "Tip-Up Town" was originated some 30 years ago by a handful of ice fishermen. Today it is rated among the top 10 winter festivals in the nation.

While activities still center around ice fishing contests and prize winning catches of pike, bass and panfish, the list of "non-fishy" things to do is long and varied. There are parades, dances, golf tournaments on the ice, balloon rides and parachute jumps and "the largest snowmobile safari in the world." There is something for everyone and all with one purpose, as stated in the "Tip-Up Town" bylaws: "to promote bigger lies, hilarity, Tom Foolery and good will."

Perchville USA, Feb. 1-3, at Tawas/East Tawas, is another event that was originally inspired by ice fishing. The most popular tradition of Perchville, however, is the Polar Bear Swim, an invigorating dip in the frigid, February waters of Tawas Bay by the hardest—or fool hardest—festival goers. In the beginning, participants "took the plunge" on a dare for a reward of \$20. Today it's all for the "goose bumped" honor of membership in the Polar Bear Club.

Perchville also encompasses a host of less daring activities and events, many planned especially for the younger generation. And, over-all, a light-hearted spirit and carnival atmosphere.

The creative ice sculptures that highlight the annual Michigan Tech Winter Carnival, Feb. 1-10, Houghton, attract hundreds of visitors from all parts of the country to the campus of this Upper Peninsula University. The sculpture competition is serious business among the school's sororities and fraternities and students spend many, many cold, arduous hours packing, molding and carving their incredible creations of snow and water. The results are truly spectacular.

In toto, it's a full week of high jinx and high spirited activity that includes skiing, hockey, an original stage revue and sled dog races without dogs.

The Harrison Mardi Gras, Dec. 28-Jan. 1, is one of Michigan's younger winter events. Centered around snowmobiling, the festival concentrates on family participation. Organized activities include snowmobile safaris, treasure hunts and races and a wild 'n woolly "snodoo." There is 'n country skating too, and a friendly bonfire and sing-along.

The Harrison area is dotted with lakes and invested with acres of forest and wilderness which provides miles and miles of tranquil, scenic trails.

The Mardi Gras de Snow, Jan. 18-20, Paradise and Grayling's Winter Sports Carnival, Feb. 8-10 and 15-17 are also popular, full-of-fun snowmobile oriented festivals.

Oh yes, the North wind doth blow and we do have snow, but in Michigan we make a playmate out of ole man Winter. If you would like to join in, write for the Winter Calendar of Travel Events. It's free, from the Michigan Travel Bureau, P. O. Box 30226, Lansing 48909. For Michigan ski and snowmobile conditions, call toll free: 800-292-2520, from within Michigan.

# Safety Tips Given For Tobogganers

With the arrival of winter's snow at the Metroparks and throughout southeastern Michigan, winter sports enthusiasts should follow these "safety tips" concerning the use of toboggans and sleds, according to Chief Park Ranger Robert Skellenger, of Kensington Metropark near Milford/Brighton.

The four basic facts concerning safety are outlined as follows: Know the area you are using—

- Check for hidden hazards. Snow may hide logs, stumps, stones or fences.
- Check snow condition before taking your first ride. Frozen snow and ice can cut like broken glass.
- Do not go down any hill when you cannot see the entire length of the ride.
- Do not use areas or hills where there are bumps or drop-off areas.
- Read and obey posted rules and signs.
- Use proper equipment—
- Wear warm clothing and footwear.
- Protect your face and hands with ear muffs, gloves and a scarf.
- Have a good toboggan pad securely attached to the toboggan at all times.
- Check your toboggan for broken or cracked boards after each run. Do not use broken equipment.
- Use equipment properly—
- A toboggan is very hard to steer, especially on hard-packed snow.
- Do not overload toboggans or sleds.
- Be sure to keep your arms and legs inside the toboggan or sled.
- Hold tightly to side ropes and hold the legs of the person behind you under your arms and do not let go.
- Use area safely—
- Do not use sleds and toboggans on the same runs. Sleds cut ruts and make it difficult to keep toboggans running smoothly. Toboggans pack snow and make it difficult to steer sleds.
- In heavy use areas, allow the group ahead of you sufficient time to get out of the way before starting downhill. Remember, you don't have any method of stopping once you start your ride downhill.
- Use marked returns. Do not walk up the hill where others are sledding. Get out of the way as soon as you stop. Be alert for other groups coming down the hill after you.

These safety tips apply to persons tobogganing or sledding anywhere in Michigan. Metroparks that offer sledding and tobogganing are: Stony Creek Metropark near Utica (phone 781-4242); Kensington Metropark near Milford (phone 685-1561); Lower Huron Metropark near Belleville (phone 697-9181), with moderate slopes only; and Willow Metropark near New Boston (phone 687-9181).

If you're pregnant, think before you drink, says the March of Dimes. Scientists have found that many children born to women who drink excessively during pregnancy have a pattern of physical and mental birth defects called "fetal alcohol syndrome."

## SCHOOL LUNCH MENU

Week of Jan. 7-11

Monday—Varsity burgers on buns with dill slices, french fries with catsup, pudding, milk.

Tuesday—Goulash with cheese, buttered peas, hot roll and butter, white cake with topping, milk.

Wednesday—Cold turkey sandwich with trimmings, soup of the day and crackers, ice cream, cookie, milk.

Thursday—Savory beef over buttered noodles, buttered corn, bread and butter, spiced apples, milk.

Friday—Fish burger on bun with sauce, potato chips, cole slaw, Jell-O dessert, milk.

The canals, boat basins and Lake St. Clair at Metro Beach Metropark near Mt. Clemens are one of southeastern Michigan's favorite ice fishing sites. For information phone 963-3022 (Detroit line) or 463-4581 (Mt. Clemens).

**NOW ON TUESDAY NIGHTS**  
**CHICKEN BUFFET**  
 Thursday, Friday, Saturday open till 7

**VISA** **master charge**

**NOW SERVING COCKTAILS IN OUR NEW BAR**

**our Famous Deep-Fried Chicken and SPECIAL BARBECUED CHICKEN**  
 also mashed potatoes and gravy, dressing, and salad bar.  
 Serving from 4:30-9:30

**at the CAPTAINS TABLE**  
 8093 MAIN ST., DEXTER PH. 426-3811

You Read It First in The Standard!

**FULL LINE SUPERMARKET**  
 BEER - WINE - LIQUOR  
 AUTHORIZED  
 FOOD STAMP STORE  
 MARATHON GAS PUMPS

# Jiffy market

Big Enough To Serve You . . . Small Enough To Know You!

Open 7 Days A Week  
 7 a.m. to 10 p.m.  
 Corner Sibley & Werkner Rds.  
 PHONE 475-1701

Sale Prices Effective thru Sunday, Jan. 6

**Guaranteed Satisfaction - Courteous Service - U.S.D.A. Choice Meats**

Young - Lean - Tender

## PORK LOINS

1/4 LOIN  
 Cut into 8-11 Chops.  
**\$1.39 lb.**

**CHICKEN, Drums & Thighs, lb. 79c**

CORN KING  
**SLICED BACON . . . . lb. \$1.19**

BULK  
**Colby Longhorn Cheese, lb. \$1.69**

FARMER PEET'S FRESH  
**RING LIVER . . . . lb. \$1.49**

U.S.D.A. CHOICE  
**BONELESS STEW BEEF, lb. \$1.69**

FARMER PEET  
**BONELESS HAM SLICES lb. \$1.99**

SALAY'S NATURAL CASING  
**VIENNA FRANKS . . . . lb. \$1.89**

FRESH, TENDER  
**BEEF LIVER . . . . lb. 98c**

## GROCERIES

5-LB. BAG  
**GOLD MEDAL FLOUR . . . . 79c**

QUARTERED  
**Meadowdale Margarine, lb. 39c**

1-LB., 2-OZ. BOX  
**KELLOGG'S CORN FLAKES, 89c**

MARDI GRAS  
**JUMBO PAPER TOWELS . . . . 69c**

50-CY. BOX  
**BAYER ASPIRIN . . . . . 89c**

SAVE 20c  
**WONDER BREAD . . . . . 59c**

VELVET CREAMY  
**PEANUT BUTTER . . . . . 98c**

6-OZ. PKG. NABISCO CHEESE FLAVORED  
**NACHO TORTILLA CHIPS . . . . 59c**

ASSORTED SIZES & COLORS  
**NO-NONSENSE PANTY HOSE**

### Farm Fresh Produce

FLORIDA FRESH, CRISP  
**HEAD LETTUCE . . . . . 39c**

1-LB. PKG.  
**FRESH CARROTS . . . . . 29c**

U. S. NO. 1  
**COOKING ONIONS . . . . . lb. 19c**

## Why you should have a Marathon Credit Card . . .

Many people appreciate the advantages of purchasing petroleum products and other automotive needs with a credit card. If you are such a person, but do not have a Marathon credit card, we invite you to apply now.

On the other hand, if you have always paid cash at the service station and just haven't given much thought to using a Marathon credit card, we hope you will consider the following advantages which so many people feel are important.

- Makes buying more convenient. No need to have ready cash.
- The Marathon credit card is honored by approximately 2,000 Marathon outlets in the Midwest and by over 30,000 stations in the U.S. and Canada.
- Provides an "interest free" time payment plan for large purchases such as tires, engine tune-up, etc. Take up to 6 months to pay.
- The receipts are quite helpful in maintaining a complete record of operating costs.
- Interesting and unusual merchandise offers are made available only to Marathon credit card holders.
- Toll free telephone numbers enable you to get immediate answers to questions concerning your account.

\*The cost of credit is included in the price quoted for goods and services.

**Retain This Information**

If your account with us is a joint account which you share with your spouse or an account in the name of one spouse which the other spouse is authorized to use, you have the right to have credit information reported in both your name and your spouse's name. If you choose to have credit information concerning your account with us reported in both your name and the name of your spouse, please complete spouse's name under section of married applicant's Complete spouse employment information in this section only if spouse is contractually liable for the account.

The Federal Equal Credit Opportunity Act prohibits creditors from discriminating against credit applicants on the basis of sex or marital status. The Federal agency which administers compliance with this law concerning this corporation is the Federal Trade Commission, Washington, D.C. 20580.

Some state laws require that creditors make credit equally available to all credit worthy customers and that credit reporting agencies maintain separate credit histories on each individual upon request.

**MARATHON**  
 To apply for a Marathon credit card, complete the request form and take to the station address shown at the right or mail to Marathon Oil Company, P.O. Box 81, Findlay, Ohio

**JIFFY MARKET**  
 6065 WERKNER ROAD  
 CHELSEA, MICHIGAN 48118

Yes! I would like \_\_\_\_\_ Marathon Credit Card(s)

Name \_\_\_\_\_ Last \_\_\_\_\_ First \_\_\_\_\_ Initial \_\_\_\_\_ Will Spouse use account? Yes  No

Address \_\_\_\_\_ Will Spouse be contractually liable? Yes  No

City \_\_\_\_\_ State \_\_\_\_\_ Zip Code \_\_\_\_\_ Spouse's Name \_\_\_\_\_

Telephone \_\_\_\_\_ Social Security \_\_\_\_\_

Applicant's Age \_\_\_\_\_ Number of Dependents \_\_\_\_\_

Years at Address \_\_\_\_\_ Current \_\_\_\_\_ Previous \_\_\_\_\_

Previous Address City \_\_\_\_\_ State \_\_\_\_\_

Occupation \_\_\_\_\_ Employer's Name \_\_\_\_\_ Applicant's Signature \_\_\_\_\_ Date \_\_\_\_\_

State \_\_\_\_\_ Zip Code \_\_\_\_\_ Length of Employment \_\_\_\_\_ Yrs \_\_\_\_\_ Spouse's Signature \_\_\_\_\_ Date \_\_\_\_\_

## FARM MAID DAIRY

PLASTIC JUG  
**HOMOGENIZED MILK gal. \$1.89**

PLASTIC JUG  
**LOW-FAT MILK . . . . gal. \$1.69**

FRESH  
**ORANGE JUICE . . 1/2 gal. 99c**

**HALF & HALF . . . . pt. 59c**

**SOUR CREAM . . . . 1/2 pt. 39c**

**JIFFY MEAT SERVICE**  
 Custom cutting, wrapping, freezing. Quick service on butchering. Your beef.  
 U.S.D.A. CHOICE SIDES OF BEEF  
 ★ Fronts ★ Hinds  
 ★ Whole Rib ★ Whole Loin

**JIFFY MARATHON GAS PUMPS**  
**MARATHON MOTOR OIL, qt. 79c**  
 10 - 20 or 30 wt.

NOTE . . . . .  
 Because of the unstable situation of gas prices and supply, we cannot advertise a price. Just promise to do the best we can.

**GAS PUMPS & STORE OPEN 7 a.m. To 10 p.m. 7 Days a Week - U. S. Authorized Food Stamp Store - Daily & Sunday Papers**





## + Services in Our Churches +

**CONGREGATIONAL CHURCH**  
(United Church of Christ)  
The Rev. Carl Schwarm, Pastor  
Every Sunday—  
10:30 a.m.—Worship and Sunday school. Nursery provided for pre-schoolers.

**ST. JACOB EVANGELICAL LUTHERAN CHURCH**  
The Rev. Andrew Bloom, Pastor  
12501 Riethmiller Rd., Grass Lake  
Every Sunday—  
9:00 a.m.—Sunday school.  
10:15 a.m.—Divine services.

**ZION LUTHERAN CHURCH**  
Corner of Fletcher and Waters Rds.  
The Rev. John R. Morris, Pastor  
Sunday, Jan. 6—  
9:00 a.m.—Sunday school.  
10:15 a.m.—Worship service.

**CHURCH OF CHRIST**  
13661 Old US-12, East  
Evangelist John M. Hamilton  
Every Sunday—  
7:30 a.m.—Radio program—WNRS in Saline.  
8:30 a.m.—Radio program—WAAM in Ann Arbor.  
9:30 a.m.—Bible study.  
10:30 a.m.—Worship service. Nursery available.  
6:00 p.m.—Sunday evening Bible study.  
Every Tuesday—  
7:00 p.m.—Women's Bible study class.  
Every Wednesday—  
7:30 p.m.—Bible study classes for all ages.

**FIRST CHURCH OF CHRIST—SCIENTIST**  
1883 Washtenaw Ave., Ann Arbor  
Every Sunday—  
10:30 a.m.—Sunday school, morning service.

**ST. JOHN'S EVANGELICAL AND REFORMED CHURCH**  
(United Church of Christ)  
Francisco  
The Rev. Ben Mahrle, Pastor  
Every Sunday—  
10:30 a.m.—Sunday school and worship service.

**FAITH EVANGELICAL LUTHERAN CHURCH**  
9575 North Territorial Rd.  
The Rev. Mark Porinsky, Pastor  
Sunday, Jan. 6—  
8:45 a.m.—Sunday school; Adult Bible class.  
10:00 a.m.—Worship service with Holy Communion. Sermon on Amos 8:11-14.  
7:00 p.m.—Youth group at Darlington.

**METHODIST HOME CHAPEL**  
Chaplain Ira Wood  
Every Sunday—  
8:45 a.m.—Worship service.

**FIRST ASSEMBLY OF GOD**  
The Rev. Richard Coury, Pastor  
Every Sunday—  
9:45 a.m.—Sunday school.  
11:00 a.m.—Worship service.  
6:00 p.m.—Evening worship.  
Every Wednesday—  
7:00 p.m.—Christ's Ambassadors. Missionettes. Bible Meditation and prayer.

**ST. MARY CATHOLIC CHURCH**  
The Rev. Fr. David Phillip Dupuis, Pastor  
Mass Schedule:  
Every Saturday—  
4:00-5:00 p.m.—Confessions.  
5:00 p.m.—Mass.  
Immediately after 7 p.m. Mass, Confession.  
Every Sunday—  
8:00 a.m., 10:00 a.m., 12:00 noon—Mass.

**GREGORY BAPTIST CHURCH**  
The Rev. David Brinkman, Pastor  
Every Sunday—  
9:45 a.m.—Sunday school.  
11:00 a.m.—Morning worship.  
6:00 p.m.—Young people.  
7:00 p.m.—Evening worship.

**METHODIST HOME CHAPEL**  
Chaplain Ira Wood  
Every Sunday—  
8:45 a.m.—Worship service.

**CHELSEA FREE METHODIST FELLOWSHIP**  
Meetings at St. Barnabas Episcopal Church  
20500 Old US-12  
Every Sunday—  
3:45 p.m.—Sunday school for all ages.  
5:00 p.m.—Worship service.  
Every Thursday—  
7:30 p.m.—Adult study, Children's CYC program, and youth meeting.

**NORTH SHARON BIBLE CHURCH**  
Sylvan and Washburne Rds.  
The Rev. Ronald C. Purkey, Pastor  
Every Sunday—  
10:00 a.m.—Sunday school. (Nursery available.) Junior church classes.  
11:00 a.m.—Worship service.  
6:00 p.m.—Senior High Youth meeting. Youth choir.  
7:00 p.m.—Evening worship service. (Nursery available.) All services interpreted for the deaf.

**OUR SAVIOR LUTHERAN CHURCH**  
1515 S. Main, Chelsea  
The Rev. Franklin H. Giebel, Pastor  
Broadcast Sundays—  
"The Church of the Lutheran Hour."  
8:35 a.m.—WIBM, 1450 AM, Jackson.  
12:30 p.m.—WYFC, 1520 AM, Ypsilanti.  
Every Sunday—  
9:00 a.m.—Sunday school, Youth and Adult Bible class.  
10:30 a.m.—Morning Worship.  
Every Wednesday—  
7:30 p.m.—Adult Bible Study and prayer.

**ST. THOMAS EVANGELICAL LUTHERAN**  
Ellsworth and Haab Rds.  
The Rev. Paul Puffe, Pastor  
Every Sunday—  
9:30 a.m.—Sunday school.  
10:45 a.m.—Worship service.

**ST. JOHN'S UNITED CHURCH OF CHRIST**  
Rogers Corners  
Every Sunday—  
10:30 a.m.—Worship and Sunday school.

**BAHA'I FIRESIDE**  
Every Thursday—  
8:00 p.m.—At the home of Toby Peterson, 705 S. Main St. Anyone wishing to learn about the Baha'i faith is welcome.

**WATERLOO VILLAGE UNITED METHODIST CHURCH**  
8118 Washington St.  
The Rev. Larry Nichols and The Rev. David Goldsmith, Pastors  
Every Sunday—  
10:00 a.m.—Sunday school.  
11:15 a.m.—Worship service.

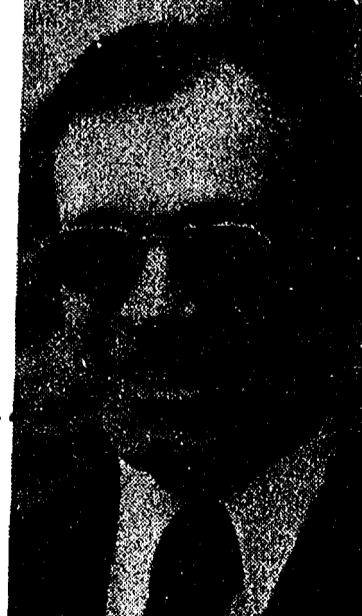
**CHELSEA CHURCH OF THE UNCOMPROMISING WORD**  
11452 Jackson Rd.  
The Rev. Chuck Clemons, Pastor  
Every Sunday—  
10:00 a.m.—Sunday school.  
11:00 a.m.—Morning worship.  
6:30 p.m.—Evening worship.  
Every Wednesday—  
7:00 p.m.—Midweek prayer and Bible study.

**FIRST UNITED METHODIST CHURCH**  
The Rev. Marvin H. McCallum, Pastor  
Sunday, Jan. 6—  
9:00 a.m.—Communion Sunday. Worship service. Crib nursery provided.  
10:00 a.m.—Worship service. Communion Sunday. Crib nursery provided for children up to the age of two. Church school for children ages two through five.  
10:20 a.m.—Church school for kindergartners through sixth graders.  
10:50 a.m.—Coffee and punch hour.  
11:00 a.m.—Church school for junior-senior high and adults.  
11:50 a.m.—All church school classes are dismissed.

Are you looking for more out of life?  
Come to the FREE CHRISTIAN SCIENCE LECTURE:  
"Christ - The Light Shining in Darkness"  
by  
Robert W. Jeffery, C.S. of Franklin, Michigan  
SUNDAY, JANUARY 13, 1980  
3:00 p.m.  
FIRST CHURCH OF CHRIST, SCIENTIST  
1833 Washtenaw  
Ann Arbor, Michigan

**BEST WAY CARPET CLEANING**  
features our  
**TRUCK MOUNTED STEAM CLEANING PLANT**  
We get your carpets cleaner!  
TRAINED, UNIFORMED TECHNICIANS  
Also: Upholstery Cleaning our specialty.  
Drapes, Walls, Exteriors Cleaned, too.  
SATISFACTION GUARANTEED.  
BONDED INSURED **663-2733** FREE ESTIMATES

**Empathy Means Special Understanding**



**DONALD A. COLE**  
Director

Empathy is the ability to put oneself into the position of another. It is important to a funeral director because it enables him to anticipate the needs of the bereaving family and to more completely meet those needs in his service.

Empathy is a quality shared by all of our personnel.

**BURGHARDT-COLE CHELSEA CHAPEL**  
214 East Middle Street  
Phone 475-1551  
Member, The International Order Of The Golden Rule

**IMMANUEL BIBLE CHURCH**  
145 E. Summit St.  
The Rev. Ron Little, Pastor  
Every Sunday—  
9:45 a.m.—Sunday school, nursery provided.  
11:00 a.m.—Morning worship, nursery provided.  
6:00 p.m.—Evening worship.  
Every Wednesday—  
7:00 p.m.—Family hour, prayer meeting and Bible study.

**BETHEL EVANGELICAL AND REFORMED CHURCH**  
(United Church of Christ)  
Freedom Township  
The Rev. Roman A. Reineck, Pastor  
Every Sunday—  
10:00 a.m.—Worship service.

**ST. BARNABAS EPISCOPAL CHURCH**  
The Rev. Fr. Jerrold F. Beaumont, B.S.P.  
10:00 a.m.—Holy Communion first, third and fifth Sundays and 7:30 p.m. every Wednesday.  
10:00 a.m.—Morning prayer, second and fourth Sundays. Church school and nursery every Sunday.  
Every Wednesday—  
8:15 p.m.—Bible study and discussion groups.  
First Wednesday of every month—  
Bishop's Committee.  
Third Thursday of every month—  
Episcopal church women.

**FIRST UNITED METHODIST CHURCH**  
The Rev. Marvin H. McCallum, Pastor  
Sunday, Jan. 6—  
9:00 a.m.—Communion Sunday. Worship service. Crib nursery provided.  
10:00 a.m.—Worship service. Communion Sunday. Crib nursery provided for children up to the age of two. Church school for children ages two through five.  
10:20 a.m.—Church school for kindergartners through sixth graders.  
10:50 a.m.—Coffee and punch hour.  
11:00 a.m.—Church school for junior-senior high and adults.  
11:50 a.m.—All church school classes are dismissed.

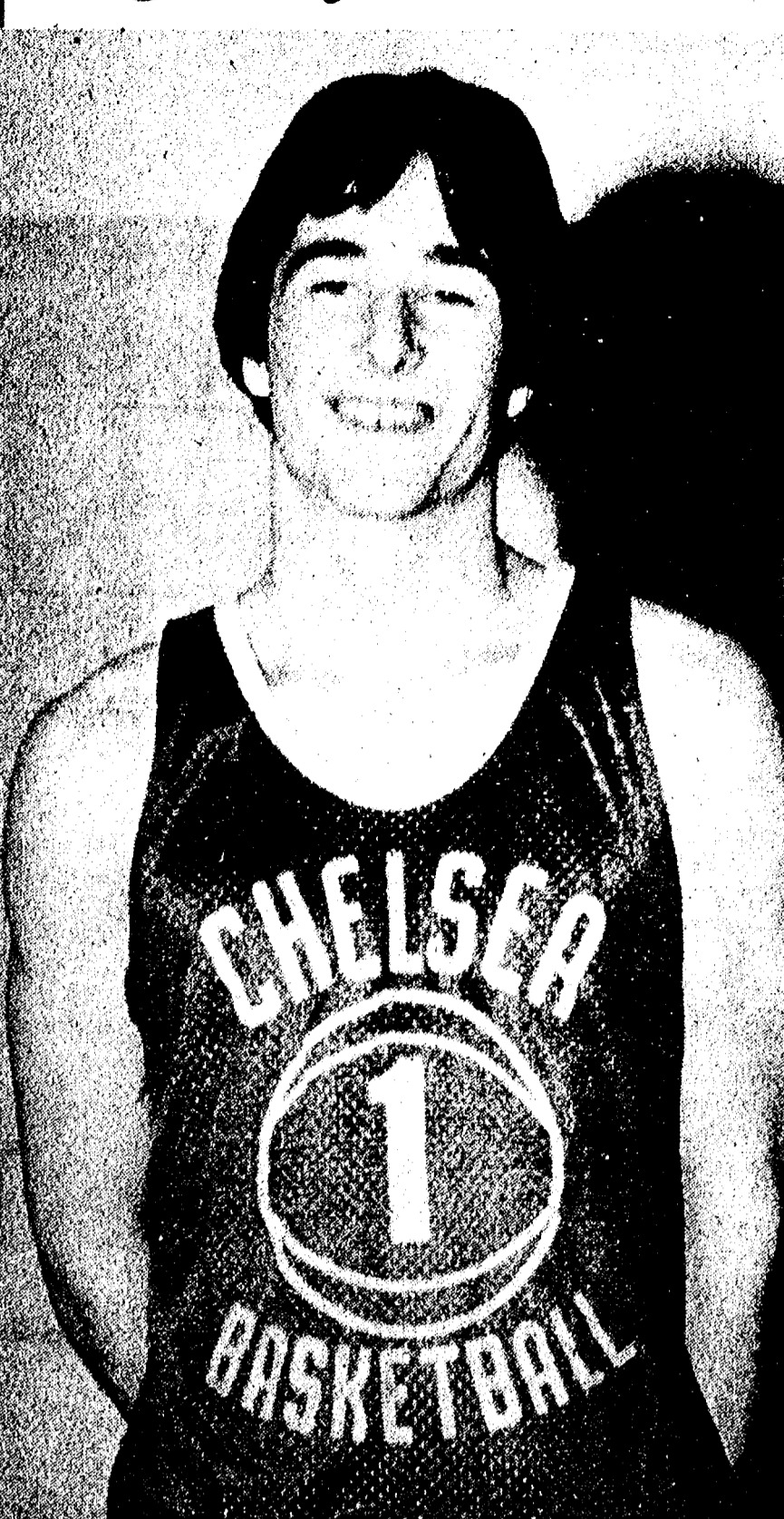
**ST. PAUL UNITED CHURCH OF CHRIST**  
Dr. William C. Donald, Interim Pastor  
Sunday, Jan. 6—  
9:00 a.m. and 10:30 a.m.—Church school.  
9:00 a.m.—7th and 8th grade confirmation.  
10:30 a.m.—Worship service.  
Tuesday, Jan. 8—  
7:00 p.m.—Christian Education.  
8:00 p.m.—Teachers' Meeting.  
8:00 p.m.—Chelsea Child Study Club.  
Wednesday, Jan. 9—  
1:30 p.m.—World Wide.

**NORTH LAKE UNITED METHODIST CHURCH**  
The Rev. John Elliott, Pastor  
Every Sunday—  
10:00 a.m.—Worship service.  
10:30 a.m.—Church school for children age three through high school.

**CHELSEA CHRISTIAN MEN'S FELLOWSHIP PRAYER BREAKFAST**  
(Non-Denominational)  
First Saturday Each Month—  
8:00 a.m.—Breakfast.  
8:30-10:00 a.m.—Program.

**CHELSEA HOSPITAL MINISTRY**  
(Non-Denominational)  
Every Sunday—  
10:00 a.m.—Morning service, Chelsea Community Hospital Cafeteria.

## Cager of the Week



### Heating Bill Help May Be Available

As home heating costs continue to rise, it becomes more difficult for low-income and senior citizens to pay the high price necessary to keep warm. This winter, Michigan has more than \$100 million of state and federal funds available for various energy assistance programs. Low-income persons having problems paying home heating bills, may be eligible for individual financial assistance, tax credits or a variety of other services. The Michigan Department of Labor and the 30 local based Community Action Agencies are operating the Energy Crisis Assistance Program (ECAP) and the home weatherization program. The Energy Crisis Assistance Program has approximately \$19 million available to low-income households for payment of heating fuel/utility bills. Eligible households may receive from \$280 to \$400 of assistance paid directly to their utility company or fuel suppliers. Under ECAP, an eligible household in the Upper Peninsula, for example, which heats with fuel oil, would receive the maximum \$400, while a natural gas customer in the southern lower peninsula would receive the \$280 minimum. The Community Action Agencies also operate the home weatherization program. The home weatherization program will provide approximately \$30 million over the next 12 months, to help conserve energy and lower heating costs by weatherizing homes. This program provides insulation, weatherstripping, caulking and other weatherization related repairs. Eligible low-income homeowners and renters may receive up to \$1,000 in services and materials. Benefits for veterans and their families and how to get them are described in a booklet, "Federal Benefits for Veterans and Dependents." It can be obtained by sending a check for \$1.50 to Superintendent of Documents, U. S. Government Printing Office, Washington, D. C. 20402. Subscribe today to The Standard.

**SALEM GROVE UNITED METHODIST CHURCH**  
3320 Notten Rd.  
The Rev. Ronald Brunger, Pastor  
Every Sunday—  
9:30 a.m.—Sunday school.  
10:30 a.m.—Worship service.

**FIRST UNITED PRESBYTERIAN CHURCH**  
Unadilla  
The Rev. T. H. Liang, Pastor  
Every Sunday—  
9:45 a.m.—Sunday school.  
11:00 a.m.—Worship service.

**FIRST UNITED METHODIST**  
Parks and Territorial Rds.  
The Rev. Larry Nicols and the Rev. David Goldsmith, Pastors  
Every Sunday—  
9:15 a.m.—Morning worship.  
10:00 a.m.—Sunday school.

**CHURCH OF JESUS CHRIST OF LATTER-DAY SAINTS**  
Meetings at Rebekah Hall  
Every Sunday—  
11:00 a.m.—Worship service.

**CHELSEA BAPTIST CHURCH**  
337 Wilkinson St.  
The Rev. Thode B. Thodeson, Pastor  
Every Sunday—  
10:30 a.m.—Morning worship.  
11:00 a.m.—Junior church school.  
6:00 p.m.—Evening fellowship.  
Every Wednesday—  
7:00 p.m.—Midweek Bible study and prayer.

### Less Spilt Milk

Milk no longer ran loose in Brooklyn after Jan. 11, 1878. On that date, milkmen began delivering it to Brooklyn homes in glass bottles. Up to that time, purchasers brought containers to their milkman and watched as he ladled out the quantity desired. The Home Arts Collection at Henry Ford Museum, Dearborn, offers an extensive array of dairy objects from early buckets and bottles to milk pails, churns and cheese presses.



## Real Estate

By PAUL FRISINGER  
REALTOR

### FLEXIBLE MORTGAGE

There's a new type of mortgage loan which would tailor the payment schedule to the borrower's needs and abilities. Instead of level payments for the life of the loan, payments could be smaller for one period and larger for another period depending on your future earning prospects.

Under the proposed regulations, the borrower and lender would negotiate the repayment schedule as long as each payment would cover interest costs and would be on a fully amortized basis after eight years. Thus, a young couple could arrange smaller payments during the initial years of the term or an elderly couple could have smaller payments following retirement.

As an example, take a 30-year mortgage where the normal monthly principal and interest payment would be approximately \$220. Using the flexible payment plan, the borrower could pay as little as \$200 per month for the first eight years, then \$240 for the remainder of the term. This type of home loan is being phased in on a state by state process.

If there is anything we can do to help you in the field of real estate, please phone or drop in at FRISINGER REALTY CO., 935 S. Main St., Chelsea. Phone: 475-8681; evenings 475-2621. We're here to help!

475-8680  
475-8689

115 PARK ST.  
CHELSEA, MICH.

## The Bible-The Light from Heaven

Uses several descriptive words that help to identify the children of God-Christians. In pursuit, a Christian is a follower of Christ. He practices self-denial and follows Jesus' example of living. (Matthew 16:24; I Peter 1:21). In knowledge, he is a disciple or learner. Jesus said, "Come . . . learn of me." (Matthew 11:29). In character a Christian is a saint. ( Corinthians 1:1, 2). In connection and relationship, he is a branch in the vine. In the gospel of John we read the words of Jesus: "If a man abide not in me, he is cast forth as a branch, and is withered: and men gather them, and cast them into the fire, and they are burned. (John 15:6). In illumination, a child of God is light. (Matthew 5:14-16). In labor, a Christian is a sower; in combat, a soldier; and in alertness, a watchman. (Matthew 13:3; 2 Timothy 2:8; Ephesians 6:11-17; Matthew 26:41).

### CHELSEA CHURCH OF CHRIST

13661 Old US-12  
Chelsea, Michigan

## MAYER AGENCY

(of Springer-Kleinschmidt Agency Inc.)

Your Local Independent Insurance Agency providing dependable protection and prompt claim payment through 10 of the nation's leading insurance companies.



**Sheridan W. Springer**

Ruth DeVine

### INSURANCE

**Charles A. Kleinschmidt**

Donald S. Peck



**Micky Quackenbush**



## ROBERTS PAINT & BODY



"We do our best to satisfy"

20416 Old US-12 West  
Chelsea, Mich.

Ph. 475-1149

Open 8 a.m.-5 p.m. Daily

### OFFICIAL NOTICE

## The Regular January Meeting of the SYLVAN TOWNSHIP BOARD

will be held

Tuesday, January 8, 1980 - 7:00 p.m.

at the

Sylvan Township Hall,  
112 W. Middle St., Chelsea, Mich.

DONALD SCHOENBERG  
Sylvan Township Supervisor



SCRIMAGE was part of a rigorous practice session last Friday, as Chelsea's varsity cagers worked on their skills for the remainder of their

season. Thus far 3-1 on the season, Chelsea faces Dexter, Saline, Howell, Lumen Christi and Tecumseh in their first games of 1980.

## Jaycettes Fight Reyes Syndrome

(Continued from page one)

Chelsea's Jaycee Auxiliary is taking orders for tickets to a soccer game at the Pontiac Silverdome on Feb. 12, 7:30 p.m. Three dollars from each \$6.50 ticket will be donated to Reyes Syndrome research. A highlight of the Detroit-Ft. Lauderdale game will be the presentation at halftime of a check for Reyes Syndrome research.

Anyone wishing to purchase tickets may call Nan Rowe at 475-7661 or Carol Smith at

475-2038. They can also provide additional information sheets regarding Reyes Syndrome.

Anyone desiring to make direct contributions to the research may write to the Reyes Syndrome Study Center, c/o Michigan Jaycees, 230 N. Washington Sq., Lansing 48933.

Please Notify Us of Any Change in Address

## Basketball

(Continued from page one)

and half of the season, however, we should see juniors playing more than they do now."

With the home season re-opening tomorrow night, Raymond has strong feelings about one of his team's potential assets—the home fans. "We play well at home but we'd play better if the fans went crazy," he insisted. "It builds up the kids emotionally if the crowd is fired up, yelling and screaming and cheering, and the pep band playing. I think that in the Brighton game (at Brighton) the crowd hurt us."

Raymond hopes the 1980 crowds will be a little less sedate in their vocal support for the Bulldogs than those who came to the first two home contests. "A crowd," concluded Raymond, "is anywhere between five and ten points to the home team."

### Jr. High Basketball

Jan. 8—Lincoln	.....A
Jan. 15—Milan	.....A
Jan. 22—Saline	.....H
Jan. 24—Pinckney	.....A
Jan. 29—Tecumseh	.....A
Feb. 5—Lincoln	.....H
Feb. 7—Saline	.....A
Feb. 12—Dexter	.....A
Feb. 14—Milan	.....H
Feb. 16—Stockbridge Tourn.	.....

### Jr. High Wrestling

Jan. 3—Jackson Middle	.....H
Jan. 9—Pinckney	.....A
Jan. 16—Tecumseh	.....A
Jan. 24—Saline	.....A
Jan. 30—Tecumseh	.....H
Feb. 4—Northwest	.....A
Feb. 6—Pinckney	.....H
Feb. 12—Saline	.....H

Home matches begin at 4 p.m.

## New 2½-Year Certificate of Deposit Being Offered

A new 2½-year Certificate of Deposit will be available effective Jan. 1, at the Ann Arbor Trust Co., it was announced today by George H. Cress, president. The new maturity is offered pursuant to recent Federal regulations.

Interest rate for this certificate will be pegged to the return on 2½-year Treasury Securities and will be compounded quarterly. The rate will change at the beginning of each month. The minimum deposit required will be \$1,000. This certificate will replace the existing 4-year floating rate time deposit.

Ann Arbor Trust is also increasing their rate from 5½% to

5¾% on small Certificates of Deposit maturing from 90 days to one year.

Cress also announced that Ann Arbor Trust Board of Directors has approved a five cent increase in the quarterly dividend distribution, from \$.35 to \$.40. This makes the annual rate \$1.60, he noted, effective with the current December distribution to stockholders.

In related action, the Trust Company Board approved a change in date for the annual stockholders meeting. Instead of the traditional February date, the 1980 meeting will be held on Tuesday, March 18, at a time and place to be announced.

### Varsity Basketball

Jan. 4—Dexter	.....H
Jan. 11—Saline	.....A
Jan. 12—Lincoln	.....H
Jan. 15—Howell	.....A
Jan. 18—Lumen Christi	.....H
Jan. 22—Tecumseh	.....A
Jan. 25—J.C. Western	.....A
Jan. 29—Pinckney	.....H
Feb. 2—Milan	.....H
Feb. 8—Dexter	.....A
Feb. 12—C. Airport	.....A
Feb. 15—Saline	.....H
Feb. 19—J. Northwest	.....H
Feb. 22—Lincoln	.....A
Feb. 26—Willow Run	.....H
Feb. 29—Mason	.....A

Home games follow JV games

### JV Basketball

Jan. 4—Dexter	.....H
Jan. 11—Saline	.....A
Jan. 12—Lincoln	.....H
Jan. 15—Howell	.....A
Jan. 18—Lumen Christi	.....H
Jan. 22—Tecumseh	.....A
Jan. 25—J.C. Western	.....A
Jan. 29—Pinckney	.....H
Feb. 2—Milan	.....H
Feb. 8—Dexter	.....A
Feb. 12—C. Airport	.....A
Feb. 15—Saline	.....H
Feb. 19—J. Northwest	.....H
Feb. 22—Lincoln	.....A
Feb. 26—Willow Run	.....H
Feb. 29—Mason	.....A

Home games begin at 6:30 p.m.

Tell Them You Read It In The Standard!

## PORK SIDES

89<sup>c</sup> lb.

Includes:

Ham, Bacon, Chops, Steak, Spare Ribs,  
Sausage & More!

## PORK LOINS

Cut, wrapped, ready for your freezer.

\$1.19 lb.

## DUNBAR'S DEXTER LOCKER

8083 Main St., Dexter  
426-8466

## CATS

### CHELSEA AREA TRANSPORTATION SYSTEM

Transportation for the Senior Citizens, 65 years & Older, & the Handicapped.

Advance reservations are required. For morning transportation call the preceding afternoon between 1 p.m. and 3 p.m. For afternoon transportation call in the morning from 9 a.m. to 11 a.m.

CALL 475-9494

between 9 to 11 a.m. or 1 to 3 p.m.

Service hours are 9 a.m. to 4:30 p.m. daily;  
Thursdays, 9 a.m. to 1 p.m.

You Read It First in The Standard!

# NOTICE

Beginning Monday, January 7

## OUR NEW DRIVE-IN HOURS

WILL BE:

8:30 a.m.—6 p.m.

Monday through Friday  
and

9 a.m. to noon on Saturday\*

We want to do anything we can to make banking at Ann Arbor Trust easy for you.

So, stop by soon and make Ann Arbor Trust your full service bank.

\*Lobby hours:

9 a.m.-4 p.m. Monday through Thursday  
9 a.m.-6 p.m. Friday  
9 a.m.-noon Saturday



CHELSEA BANKING OFFICE  
ANN ARBOR TRUST COMPANY

1478 Chelsea-Manchester Road • Chelsea, Michigan 48118 • Phone 475-9154  
MEMBER FDIC

## January Clearance

- ★ SPORT COATS & SUITS  
1 Group at 1/2 Off - Others at 20% Off
- ★ TOPCOATS By London Fog  
20% Off
- ★ SWEATERS By Puritan  
1 Group at 1/2 Off - Others at 20% Off
- ★ LEVI'S JACKET . . . 20% Off
- ★ SPORT SHIRTS  
By Puritan - Levi's - Van Heusen  
1 Group at 1/2 Off - Others at 20% Off
- ★ OSHKOSH Matched Work Suits  
1/2 OFF (Grey color only)

STORE HOURS: Open Mon. thru Sat., 8 a.m. to 5:30 p.m.

## Strieter's Men's Wear

Since 1914



Little Want Ads! Big Pluses for Big Results!

Bus. Services 13

RON MONTANGE CONSTRUCTION (RJM, INC.) Full carpentry services... Ph. 426-2585 or 475-1080

LEONARD REITH Master Plumber Licensed Electrician Hat Water Heat 18238 N. Territorial Rd. Chelsea, Mich. 48118 Phone: 475-2044

McCulloch Portable Generators Chain Saws WE SELL, SERVICE SHARPEN AND TRADE Chelsea Hardware 211f

Janitorial Service Daily, Weekly, Monthly WE DO IT ALL! SPECIAL on carpeting, furniture and drapery cleaning... 973-1499

SNOW PLOWING DUANE DORR RESIDENTIAL OR COMMERCIAL Phone 475-8365

Staffan Funeral Home "Funeral Directors for Four Generations" 124 PARK STREET PHONE 475-1444

Bus. Services 13

KLINK EXCAVATING Bulldozer - Backhoe Road Work - Basements Trucking - Crane Work Top Soil - Demolition Drainfield - Septic Tank Trenching, 5" up Industrial, Residential, Commercial CALL 475-7631

When Winter Winds Blow Be Protected By A New Layer of Fiberglass Insulation NOW ON SALE 3 1/2" unfaced - 15c sq. ft. \$20.16 a bag

J. R. CARRUTHERS LICENSED RESIDENTIAL BUILDER CUSTOM HOMES ADDITIONS/FIREPLACES PATIOS ROOFING/SIDING/REPAIRS 475-7234 CHELSEA

SNOWPLOWING PHIL McDANIELS Ph. 475-2430 Your Wedding deserves the very best in Wedding Flowers

ATTIC INSULATION Class 1 Cellulose Insulation installed by trained installers FOAM WALL INSULATION Higher thermal efficiency of any insulation type.

FOAM MASTERS Complete insulation contractor Licensed and Insured. 475-1625 Free Estimates

Bus. Services 13

LAWN MAINTENANCE SNOW PLOWING SMALL LANDSCAPING RICHARD SMITH 475-8984 after 5 p.m.

JIM W. FRENCH Small Dump Trucking SAND - GRAVEL - STONE Ph. Chelsea 475-1173

Chelsea Plumbing & Heating QUALITY WORKMANSHIP REASONABLE RATES Specializing in New Construction Remodeling Hydraulic Heat

STEP UP TO KOZMA CONSTRUCTION And Step Down In Price LICENSED BUILDER FREE ESTIMATES COMPLETE CONSTRUCTION SERVICES CALL LEN KOZMA 475-7452

HANDYMAN DAN Home Repairs (517) 851-8888

Financial 14 PRIVATE PARTY. Purchasers land contracts and mortgages. Eves. only 475-1469. ALL CASH NOW for land contracts any size, any property, anywhere in Michigan.

Legal Notices 18

STATE OF MICHIGAN The Probate Court for the County of Washtenaw FILE No. 7194 Estate of FRIEDA K. SCHNEIDER, Deceased. Address of Decedent: Freedom Township. Date of Death: November 25, 1979.

STATE OF MICHIGAN In the Circuit Court for the County of Washtenaw ROSS W. CAMPBELL Circuit Judge File No. 79-2442 DM RONALD L. STANDLEY, Plaintiff, vs. PATTY A. STANDLEY, Defendant. ORDER TO ANSWER

ROSS W. CAMPBELL Circuit Judge Date of Order: Nov. 30, 1979. Prepared by: Robert F. Ponte Attorney for Plaintiff 220 West Middle Street Chelsea, Michigan 48118 Telephone: (313) 475-9191

MORTGAGE SALE - Default having been made in the terms and conditions of a certain mortgage made by DONALD R. FLETCHER, Plaintiff, against PATRY A. STANDLEY, Defendant, in this court for divorce.

Financial 14 PRIVATE PARTY. Purchasers land contracts and mortgages. Eves. only 475-1469. ALL CASH NOW for land contracts any size, any property, anywhere in Michigan.

Card of Thanks 16 The family of John (Jack) Warren wish to thank our relatives, friends, and neighbors for the cards, visits and many acts of kindness.

Legal Notices 18

Apartment 74, Building 19, Wingate Park Condominium, according to the Master Deed recorded in Liber 1997, page 946, Washtenaw County Records, and designated as Washtenaw County Condominium Subdivision Plan No. 12, together with rights in general common elements and limited common elements as set forth in the Master Deed and as described in Act 229 of the Public Acts of 1965 as amended.

STATE OF MICHIGAN In the 14th District Court for the County of Washtenaw GENERAL CIVIL ACTION FILE NO. CV 14-379-0440 MARGARET GILBERT, Executrix of the Estate of BERTHA SCHERDT, deceased, MARGARET GILBERT and ROBERT GILBERT, Plaintiffs, vs. LIBURDI DEVELOPMENT COMPANY, a Michigan Limited Partnership, Defendant.

ORDER OF PUBLICATION At a session of said Court held on the 18th day of December 1979, 122 South Main Street, Chelsea, Michigan.

MORTGAGE SALE - Default having been made in the terms and conditions of a certain mortgage made by John Spannos and Catherine Spannos, (AKA - Katherine Spannos) his wife, of Salem Township, Washtenaw County, Michigan, Mortgagee, to STANDARD FEDERAL SAVINGS AND LOAN ASSOCIATION, A Federal Association, of Troy, Oakland County, Michigan, Mortgagee, dated the 8th day of December, 1974, and recorded in Liber 1423 of the Register of Deeds for the County of Washtenaw and State of Michigan, on the 26th day of December, 1974, in Liber 1423 of Washtenaw County Records, on page 779, on which mortgage there is claimed to be due, at the date hereof, the sum of principal and interest, the sum of TWENTY ONE THOUSAND ONE HUNDRED EIGHTEEN and 77/100 Dollars (\$21,188.77).

Financial 14 PRIVATE PARTY. Purchasers land contracts and mortgages. Eves. only 475-1469. ALL CASH NOW for land contracts any size, any property, anywhere in Michigan.

NOTICE OF MORTGAGE SALE Default having been made in the terms of a mortgage made by FRANCIS J. BOURGEOIS and KATHLEEN L. BOURGEOIS, h/w to JAMES T. BARNES MORTGAGE COMPANY dated August 28, 1977, and recorded September 5, 1977, in Liber 1500 Page 490, Washtenaw County Records, and assigned by said mortgagee to GOVERNMENT NATIONAL MORTGAGE ASSOCIATION by assignment dated October 19, 1977, and recorded October 30, 1977, in Liber 1417, Page 452, Washtenaw County Records, and thereafter assigned by said assignee to CITIZENS MORTGAGE CORPORATION, n/k/a MANUFACTURERS HANOVER MORTGAGE CORPORATION, a Michigan Corporation, by assignment dated November 8, 1973, in Liber 1460, Page 731, Washtenaw County Records, on which mortgage there is claimed to be due at the date hereof for principal and interest, the sum of \$15,983.11.

Legal Notices 18

MORTGAGE SALE - Default has been made in the conditions of a mortgage made by ROBERT T. MELPI and SUZY Y. MELPI, husband and wife, to ANN ARBOR MORTGAGE CORPORATION, a Michigan corporation, Mortgagee, dated November 12, 1976, and recorded on November 22, 1976, in Liber 1531, on page 978, Washtenaw County Records, Michigan, and assigned by said Mortgagee to FEDERAL NATIONAL MORTGAGE ASSOCIATION, by an assignment dated May 24, 1979, and recorded on May 25, 1979, in Liber 1549, on page 319, Washtenaw County Records, Michigan, on which mortgage there is claimed to be due at the date hereof the sum of TWENTY FOUR THOUSAND EIGHT HUNDRED NINETY AND 60/100 Dollars (\$24,890.60), including interest at 9% per annum.

ORDER OF PUBLICATION At a session of said Court held on the 18th day of December 1979, 122 South Main Street, Chelsea, Michigan.

NOTICE OF MORTGAGE SALE Default having been made in the terms of a mortgage made by ETHEL LEE MAYO, a single woman to CITIZENS MORTGAGE CORPORATION, n/k/a MANUFACTURERS HANOVER MORTGAGE CORPORATION dated April 16, 1970, and recorded April 29, 1970, in Liber 1323, Page 943, Washtenaw County Records, and assigned by said mortgagee to FEDERAL NATIONAL MORTGAGE ASSOCIATION, a corporation organized and existing under the laws of the United States, by assignment dated May 20, 1970, and recorded May 23, 1970, in Liber 1326, Page 366, Washtenaw County Records, on which mortgage there is claimed to be due at the date hereof for principal and interest, the sum of \$17,862.47.

NOTICE OF MORTGAGE SALE Default having been made in the terms and conditions of a certain mortgage made by DONALD R. FLETCHER, Plaintiff, against PATRY A. STANDLEY, Defendant, in this court for divorce.

Financial 14 PRIVATE PARTY. Purchasers land contracts and mortgages. Eves. only 475-1469. ALL CASH NOW for land contracts any size, any property, anywhere in Michigan.

Auto-Owners Insurance YOUR Independent AGENT SERVES YOU FIRST Mayer Agency of Springer-Kleinschmidt Agency, Inc. Phone 475-8689 Chelsea, Michigan

Legal Notices 18

NOTICE OF MORTGAGE SALE Default having been made in the terms of a mortgage made by ETHEL LEE MAYO, a single woman to CITIZENS MORTGAGE CORPORATION, n/k/a MANUFACTURERS HANOVER MORTGAGE CORPORATION dated April 16, 1970, and recorded April 29, 1970, in Liber 1323, Page 943, Washtenaw County Records, and assigned by said mortgagee to FEDERAL NATIONAL MORTGAGE ASSOCIATION, a corporation organized and existing under the laws of the United States, by assignment dated May 20, 1970, and recorded May 23, 1970, in Liber 1326, Page 366, Washtenaw County Records, on which mortgage there is claimed to be due at the date hereof for principal and interest, the sum of \$17,862.47.

ORDER OF PUBLICATION At a session of said Court held on the 18th day of December 1979, 122 South Main Street, Chelsea, Michigan.

NOTICE OF MORTGAGE SALE Default having been made in the terms and conditions of a certain mortgage made by DONALD R. FLETCHER, Plaintiff, against PATRY A. STANDLEY, Defendant, in this court for divorce.

Financial 14 PRIVATE PARTY. Purchasers land contracts and mortgages. Eves. only 475-1469. ALL CASH NOW for land contracts any size, any property, anywhere in Michigan.

Auto-Owners Insurance YOUR Independent AGENT SERVES YOU FIRST Mayer Agency of Springer-Kleinschmidt Agency, Inc. Phone 475-8689 Chelsea, Michigan









**5 CONVENIENT LOCATIONS**

1101 M-52 CHELSEA  
201 PARK AVE., V.L.  
1821 SPRING ARBOR RD.  
960 N. WEST AVE.  
1809 E. MICHIGAN

**OPEN DAILY**  
**8** A.M. *til* **10** P.M.  
**SUNDAY**  
**9** A.M. *til* **6** P.M.

**MASTER  
MARKETS**

**We Keep  
You Coming  
Back!**

- ☆ **QUALITY**
- ☆ **VARIETY**
- ☆ **SERVICE**

- ☆ **QUALITY PRODUCE**
- ☆ **CHOICE BEEF**
- ☆ **FRESH BAKED GOODS**
- ☆ **LIQUOR**
- ☆ **COLD BEER**
- ☆ **LOTTERY TICKETS**

- ☆ **SIDES OF BEEF**
- ☆ **FRUIT BASKETS**
- ☆ **KEG BEER**
- ☆ **CARRY-OUT SERVICE**
- ☆ LARGE SELECTION OF **NATIONAL BRANDS**
- ☆ **LOW PRICES**

# Polly's

MASTERMARKETS



SAVE 32¢ WITH COUPON

STAR-KIST  
CHUNK  
LIGHT

## TUNA

# 59¢

6 1/2 OZ.  
CAN

### 5 CONVENIENT LOCATIONS TO SERVE YOU BETTER!

201 PARK AVE., V.C.L.,  
1821 SPRING ARBOR RD.,  
960 N. WEST AVE.,  
3102 EAST MICHIGAN,  
and 1101 M-52, CHELSEA

SALE PRICES  
GOOD THRU  
SATURDAY  
JANUARY 5, 1980



SAVE UP TO 60¢  
WITH COUPON

NABISCO

# OREO

CHOCOLATE SANDWICH COOKIES

15 OZ.  
PKG.

# 89¢

SCOT LAD

## VEGETABLE SALE . . .

1/2 WHOLE KERNEL CORN, CREAM  
STYLE CORN OR SWEET PEAS

# 4

16 OZ.  
CANS

# \$1.00



BORDEN 2% LOWFAT

## PRO-LINE MILK

HALF  
GALLON

# 77¢

MICHIGAN

## COTTAGE CHEESE

15 OZ.

# 78¢

BORDEN

## BUTTER MILK

HALF  
GALLON

# 77¢



# Polly's

MASTERMARKETS

**5** CONVENIENT  
LOCATIONS  
TO SERVE YOU BETTER!

201 PARK AVE., V.C.L.,  
1821 SPRING ARBOR RD.,  
960 N. WEST AVE.,  
3102 EAST MICHIGAN,  
and 1101 M-52, CHELSEA

SALE PRICES  
GOOD THRU  
SATURDAY  
JANUARY 5, 1980

FARMER PEET'S  
LEAN TENDER  
**PORK**

**SALE ...**

LOIN END

**PORK  
ROAST**

LB. **\$1.09**



WHOLE

**PORK  
LOIN**

LB. **99¢**

CENTER CUT

**PORK CHOPS**

LB.

**1.59**

LOIN CUT

**PORK CHOPS**

LB.

**1.69**

STUFFED

**PORK CHOPS**

LB.

**1.59**

COUNTRY STYLE

**SPARE RIBS**

LB.

**1.09**



HYGRADE

**HOT  
DOGS**

LB.

**99¢**

ALL BEEF

**HAMBURGER**

LB. **1.39**

HYGRADE

**SLICED  
BOLOGNA**

LB.

**99¢**

FOREST BROOK

**SLICED  
BACON**

LB.

**89¢**

CONTINENTAL POINT CUT

**CORN  
BEEF**

LB.

**1.39**

FROZEN

**FRESH  
SMELT**

LB.

**79¢**

FRESH FROZEN

**TURKEY  
LEGS**

LB.

**39¢**

THORNAPPLE VALLEY

**PARTY  
ASSORTMENT**

LB.

**1.59**

THORNAPPLE VALLEY

**FAMILY  
PAK**

20 OZ.

**1.79**

25¢ OFF LABEL  
**LIQUID DOVE**  
 DISH DETERGENT

32 OZ. **\$1.19**

25¢ OFF LABEL  
**FINAL TOUCH**  
 FABRIC SOFTENER

64 OZ. **\$1.59**

KING SIZE **DASH DETERGENT** ..... 49 OZ **99¢**  
 LIQUID **CLOROX BLEACH** ..... 128 OZ **79¢**  
 SENECA 100% NATURAL **APPLESAUCE** ..... 24 OZ **59¢**  
 BUSH'S BEST **CHILI HOT BEANS** ..... 15 OZ **3/89¢**  
 NEW! FRISKIES **BEEF & LIVER** ..... 15 OZ **5/\$1.00**  
 NEW! FRISKIES **CHICKEN & GIBLET** ..... 15 OZ **5/\$1.00**  
 REGULAR OR SUPER HOLD **VITALIS PUMP** ..... 5 OZ **1.19**

10¢ OFF LABEL SCHAFFER'S **SOFT n' GOOD BREAD** ..... 24 OZ **73¢**  
 10¢ OFF LABEL SCHAFFER'S **HILLBILLY BREAD** ..... 24 OZ **79¢**  
 LADY BORDEN ICE CREAM **DELUXE QUARTS** ..... **99¢**  
 BORDEN **ICE MILK BAR STIX** ..... 12 PK **1.09**  
 FAST RELIEF **EXCEDRIN** ..... 100 CT **1.79**  
 GILLETTE FOAMY **SHAVE CREAM** ..... 11 OZ **1.19**  
 MAALOX **SUSPENSION** ..... 12 OZ **1.69**

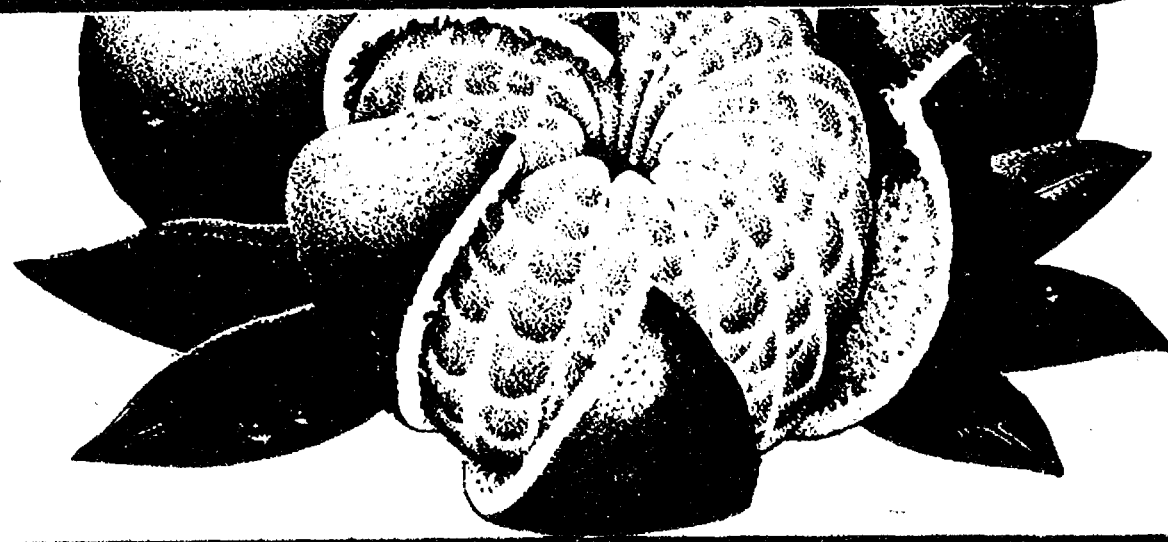
**RED GRAPES**  
**69¢**  
 LB

VITAMIN ENRICHED **CARROTS** 1 LB. BAGS **2/47¢**  
 WOODSTOCK WILD **BIRD FOOD** ..... 10 LB **1.19**  
 POPEYE **POPCORN** ..... 2 LB **59¢**  
 DELMONTE MEDIUM **PRUNES** ..... 1 LB **99¢**

**FLORIDA ORANGES**  
**99¢**  
 5 LB BAG

U.S. No. 1 MICHIGAN  
**POTATOES**  
 10 LB BAG **69¢**

FLORIDA  
**TANGELOS**  
**6/79¢**  
 80 SIZE



SAVE OVER 74¢ WITH COUPON  
**CREAMETTE**  
**THIN SPAGHETTI or**  
**ELBOW MACARONI**

**2** 1 LB. PKGS **89¢**

FRESH FROM THE  
**ALPINE BAKEHAUS...**

**APPLE PIES** ..... 8 INCH **\$1.59**  
**ENGLISH MUFFIN BREAD** ..... **79¢**

STAYFREE  
**MAXIPADS**  
 REGULAR OR SUPER  
 12 CT. **99¢**



SAVE 21¢ WITH COUPON  
**HI-DRI**

**JUMBO TOWELS**  
**2 for 89¢**

SAVE UP TO 56¢ WITH COUPON  
**HI-DRI**

**BATH TISSUE**  
 4 ROLL PAK **59¢**

**SCOPE**  
**MOUTHWASH**

**\$1.15**  
 12 OZ.

VALUABLE COUPON  
**SAVE 37¢** CREAMETTE THIN SPAGHETTI  
**2 1 LB. BOXES 89¢**  
 LIMIT 2 PER COUPON PER FAMILY  
 GOOD THRU 1-5-80

SPAGHETTI  
 Creamette  
 Creamettes  
 MACARONI

VALUABLE COUPON  
**SAVE UP TO 60¢** NABISCO OREO COOKIES  
**89¢**  
 15 OZ.  
 LIMIT 2 PER COUPON PER FAMILY  
 GOOD THRU 1-5-80



VALUABLE COUPON  
**SAVE 21¢** HI-DRI PAPER TOWELS  
**JUMBO ROLL 2/89¢**  
 LIMIT 2 PER COUPON PER FAMILY  
 GOOD THRU 1-5-80

VALUABLE COUPON  
**SAVE 37¢** CREAMETTE ELBOW MACARONI  
**2 1 LB. BOXES 89¢**  
 LIMIT 2 PER COUPON PER FAMILY  
 GOOD THRU 1-5-80

VALUABLE COUPON  
**SAVE 20¢** 20¢ OFF ON THE PURCHASE OF ANY 3 LB. BAG OF APPLES  
 LIMIT 1 PER COUPON PER FAMILY  
 GOOD THRU 1-5-80

VALUABLE COUPON  
**SAVE UP TO 40¢** SWISS MISS COCOA MIX  
**1.19**  
 12 OZ.  
 LIMIT 2 PER COUPON PER FAMILY  
 GOOD THRU 1-5-80

VALUABLE COUPON  
**SAVE 56¢** HI-DRI BATHROOM TISSUE  
**4PAK 59¢**  
 LIMIT 2 PER COUPON PER FAMILY  
 GOOD THRU 1-5-80

VALUABLE COUPON  
**SAVE 32¢** STARKIST CHUNK LIGHT TUNA  
**6 1/2 OZ. 59¢**  
 LIMIT 1 PER COUPON PER FAMILY  
 GOOD THRU 1-5-80

VALUABLE COUPON  
**SAVE 29¢** SECRET ANTI-PERSPIRANT  
**4 OZ. 1.39**  
 LIMIT 1 PER COUPON PER FAMILY  
 GOOD THRU 1-5-80

VALUABLE COUPON  
**SAVE 18¢** CHAMPION WINDSHIELD SOLVENT  
**79¢**  
 GALLON  
 LIMIT 1 PER COUPON PER FAMILY  
 GOOD THRU 1-5-80

VALUABLE COUPON  
**SAVE 18¢** FAMILY PAK SCOTT'S NAPKINS  
**160 CT. 65¢**  
 LIMIT 1 PER COUPON PER FAMILY  
 GOOD THRU 1-5-80

VALUABLE COUPON  
**SAVE 34¢** MR. COFFEE COFFEE FILTERS  
**100 CT. 69¢**  
 LIMIT 1 PER COUPON PER FAMILY  
 GOOD THRU 1-5-80

VALUABLE COUPON  
**SAVE 64¢** BODY ON TAP SHAMPOO  
**7 OZ. 1.15**  
 LIMIT 1 PER COUPON PER FAMILY  
 GOOD THRU 1-5-80

VALUABLE COUPON  
**SAVE 20¢** PAMPERS TODDLER DIAPERS  
**12 CT. 1.53**  
 LIMIT 1 PER COUPON PER FAMILY  
 GOOD THRU 1-5-80

VALUABLE COUPON  
**SAVE 20¢** BABY FRESH WIPES  
**40 CT. 89¢**  
 LIMIT 1 PER COUPON PER FAMILY  
 GOOD THRU 1-5-80